

**STIGMA**  
*of Sweden*

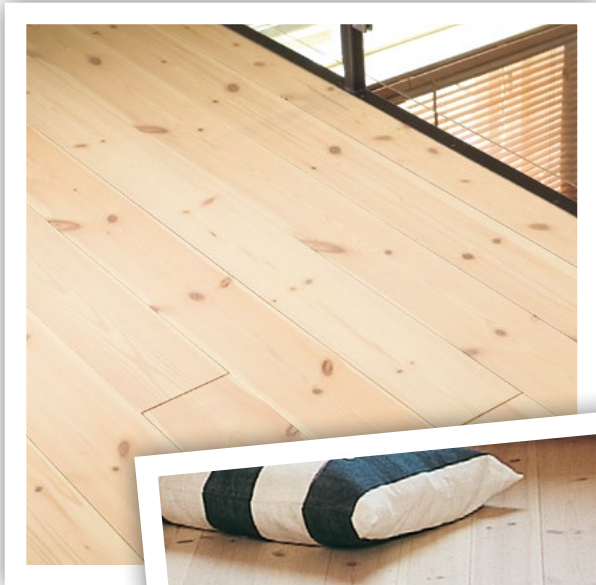
**We know wood!** For us the feeling for wood is what's most important. We closely monitor each step of the refinement process. We build up all of our operations on experience and know-how -- but we think modern. We have the ability to adapt quickly to our customers' needs without sacrificing quality.

We control the entire chain of events from the forest to your home. We are part of the Profura AB group, which includes Balungstrand Sawmills in Dalarna among others. This provides us with a stable flow of High-quality forestry produce. A piece of timber which has taken more than a century to grow should be allowed time to season and dry before it is delivered to you the customer. A floor or indoor panel produced by us reflects shades and plays of colour that only nature could have created.



**STIGMA**  
*of Sweden*





## Flooring - Quality Description

All our raw materials have been grown in Norrland, in the north of Sweden, where growth is very slow. In this manner we get heartwood of the highest Swedish quality. In our castles and manors, as well as in our homesteads, a great many timber floors have been trodden since the 16th century. Wooden floors worn by many generations have become more beautiful with the passage of each step.

A real wooden floor has no delimiting "best before" date. A Stigma floor is an investment for the future which is a joy and a beauty from the very first day.

### LOW MOISTURE CONTENT

The floorboards are dried to about 9%, which corresponds to about 50 % relative humidity at +20 ° C in a normal house. We store floors in a acclimatise storage to maintain steady and good moisture content. Thanks to the low moisture content the floor can be laid down as soon as the packaging is opened.

### SMALL MOVEMENTS

Our Wood flooring receives an all-around treatment which reduces movement in the floor. All floors are delivered tongue and grooved.

### FINISHES

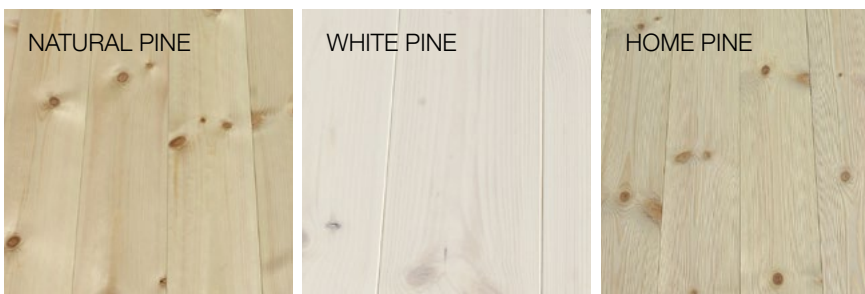
We have two different finishes; one is a floor lacquer, the other a wax oil. The floor lacquer provides a strong dirt-repelling matte finish which gives the boards an oiled look. The wax oil forms a warm, comfortable surface that has dirt-repellent properties like a scrubbed floor.

### STIGMA A-GRADE

A-sorting is our finest quality. It has natural feature of healthy knots that gives it a genuine look, but some dark knots may occur.

### STIGMA B-GRADE

A quality for the handy person who is willing to spend time planning laying the floor by sorting and cutting. The B sort may contain knot speckling, black knots and other defects.



## Tip

It is fairly phenomenal how easy it is to repair pressure marks in the wooden floor. It could be a heel which has left a mark. Proceed as follows: soaking a regular dishcloth properly, place it on the floor on top of the damaged part. After a short time, the fibers will have risen and the damage becomes invisible to the eye. The method works as long as the fibres are not cut off. Sharp objects are disastrous for all floors. If accidents do occur, thick wooden floors can be sanded again and again.

### PROFILE

Wood flooring  
1,5 mm fas



# Indoor Panelling

Our panellings are made of solid pine or spruce. Planing and polishing is done with great care and precision. As is the case with other products in our assortment, we take the raw material mainly from the northern region of the country; this is to make sure we get heartwood of the highest quality. Usually, the trees have been growing for more than a hundred years before they are harvested.

Our products retain their high quality and finish. We have a store of finished products of certain profiles and treatments in order to facilitate speedier delivery. At the same time we have a wide range of raw materials which allow us to offer products to suit customer requirements. Below are our different dimensions for panel production. We have chosen to show the most popular profiles but also to produce, within certain limits, profiles according to customer requirements.

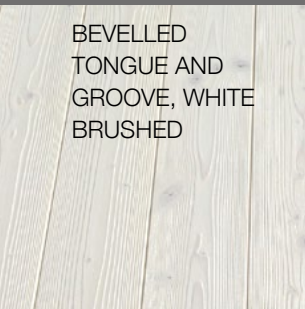
We also have the possibility to do the following to the panels:

**BRUSHING**

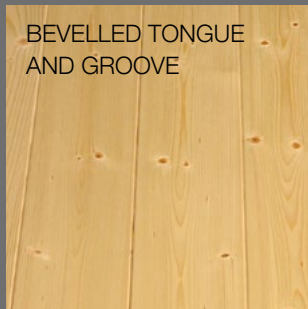
**END MATCHING WITH PROFILES**

**VARIOUS TREATMENT SUCH AS LACQUER, PANEL WAX AND COVER PAINTED.**

**WE HAVE PANELLINGS FOR WALLS, CEILINGS AND FITTINGS. WE PAINT OR SURFACE-TREAT TO TAILOR TO THE CUSTOMER'S SPECIFIC REQUIREMENTS, CREATING A PERSONAL ENVIRONMENT.**



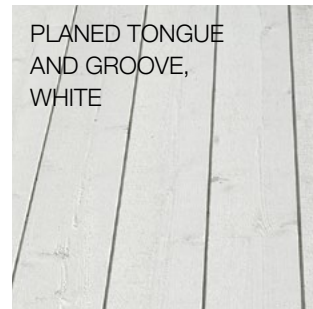
BEVELLED TONGUE AND GROOVE, WHITE BRUSHED



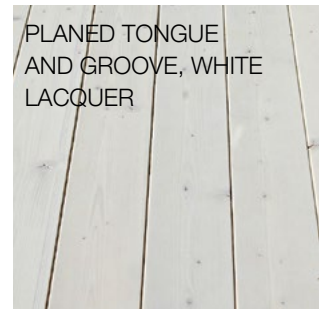
BEVELLED TONGUE AND GROOVE



PROFILED BOARD, WHITE WAX



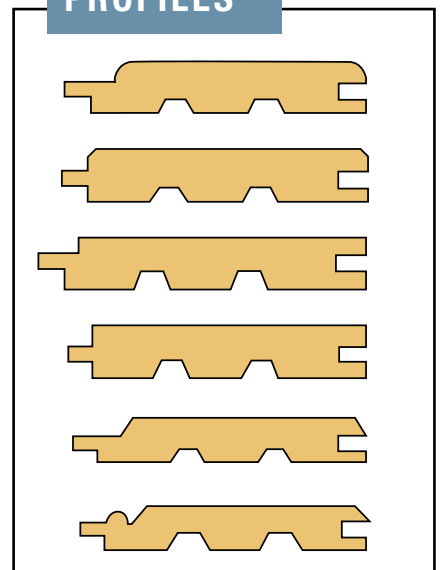
PLANED TONGUE AND GROOVE, WHITE



PLANED TONGUE AND GROOVE, WHITE LACQUER



## PROFILES



# Outdoor panel

For our outer panels we use a select high quality raw material from our own sawmill, as well as from that of carefully selected suppliers. We perform continuous checks on the moisture content and quality. We only use products which are water based and environmentally certified. High quality for the best results.

We paint or surface-treat to tailor to the customer's specific requirements, creating a personal environment.

*surface*  
**OUTDOOR**

**STANDARD LIGHT GREY BASE COAT**

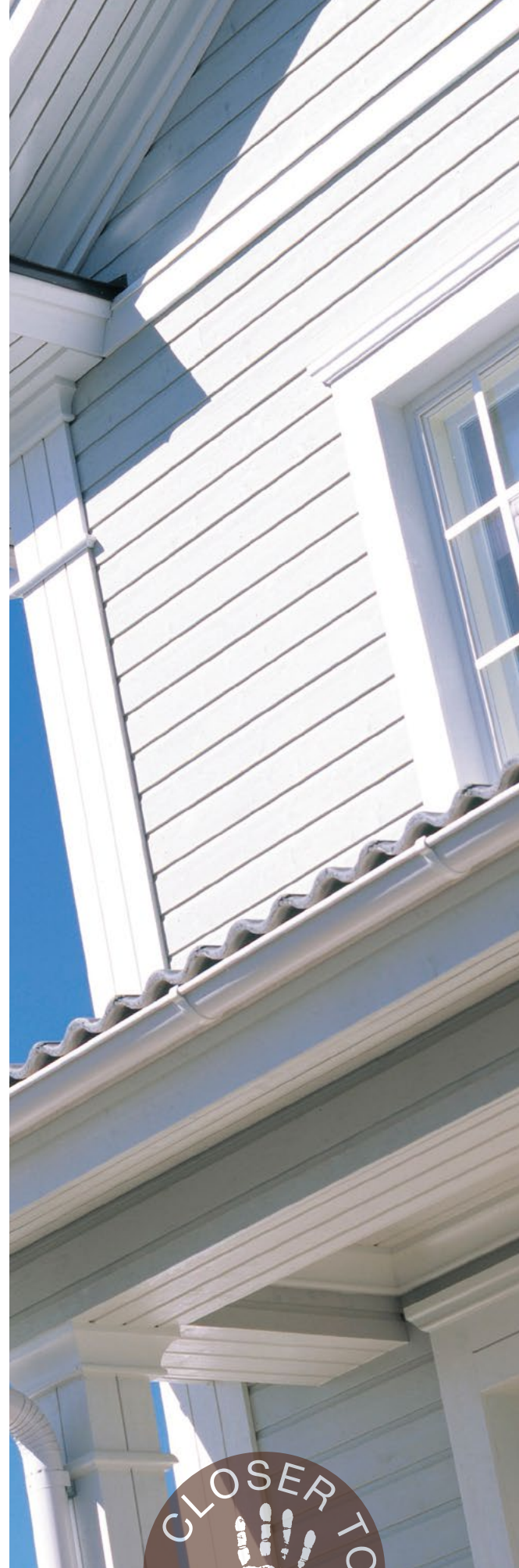
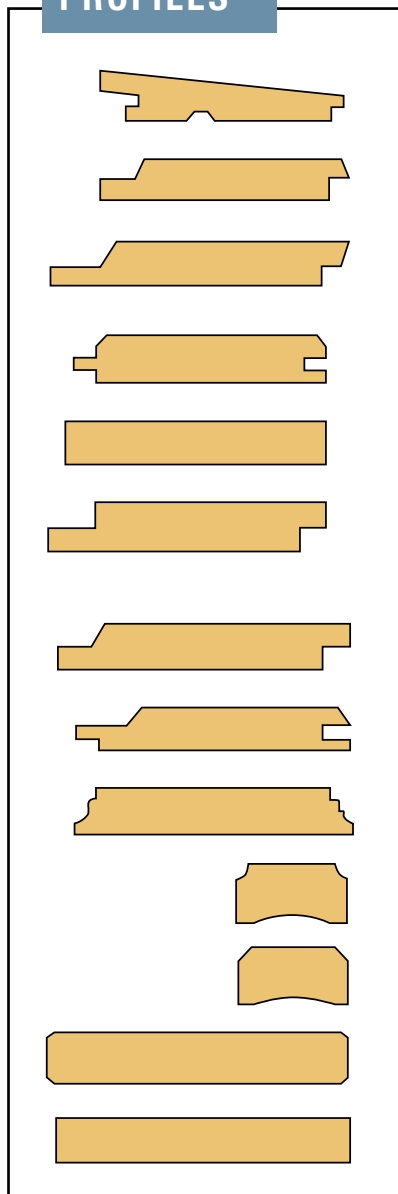
**PRESERVATIVE TREATMENT + BASE COAT**

**BASE COAT PAINTING ON A RAL OR NCA SCALE**

**BASE AND TOP COAT PAINTING**

**3 OR 4-SIDED PAINTING**

## PROFILES



# Structuring/ Brushing

With over 30 years experience in the structuring of floors and panels, we have the longest experience in the field. Brushing involves brushing away the soft part of the board made up of spring or summer wood, revealing the peaks of the winter growth. It is possible to structure most of the dimensions and profiles that we produce.

## Brushed products have the following advantages: PANELS

- The natural structure comes out on the board
- Rustic feel
- More durable surface
- Beautiful finish

## FLOORING

- The natural structure comes out on the board
- Rustic feel
- Get up to 50% harder surface than the traditional pine and spruce flooring
- Less sensitive to scrapes and blows
- A nicer feeling under your feet



# Assortment

## FLOORING

Dimension	15x117	20,5x142	26,5x142	26,5x165	26,5x190	32x190	32x215
Untreated Pine	x	x	x	x	x	x	x
Untreated Spruce		x	x		x		
Wax oil/Natural pine	x	x	x	x	x	x	
Wax oil/White pine	x	x	x	x	x	x	
Wax oil/Natural spruce		x	x		x		
Wax oil/White spruce		x	x		x		

## INDOOR PANELLING

Dimensions	Types of wood	Quality	Lengths
13,5x120/145	Spruce	A B	1,80 - 5,40
16x120	Spruce	A B	1,80 - 5,40
17,5x120/145/169/194	Spruce	A B	1,80 - 5,40
19x95/120/145	Spruce	A B	1,80 - 5,40
22x120/145	Spruce	A B	1,80 - 5,40
13x95	Pine	A B	1,80 - 5,40
13x120	Pine	A B	1,80 - 5,40
16x120	Pine	A B	1,80 - 5,40

## OUTDOOR PANELLING

Dimensions	Types of wood	1/2 pkt	1/1 pkt	Lengths
22x45	Spruce, ej ytbeh.	528 st	1056 st	18-54
22x70	Spruce, ej ytbeh.	336 st	672 st	18-54
22x95	Spruce	264 st	528 st	18-54
28x120	Spruce	216 st	432 st	18-54
28x145	Spruce	168 st	336 st	18-54
28x170	Spruce	144 st	288 st	18-54
28x195	Spruce	120 st	240 st	18-54
22x120	Spruce	180 st	360 st	18-54
22x145	Spruce	140 st	252 st	18-54
22x170	Spruce	108 st	216 st	18-54
22x195	Spruce	90 st	180 st	18-54

Bundle and shrink wrapped/Labels

OUR PRODUCTS ARE DELIVERED IN BUNDLE AND SHRINK WRAPPED, WITH LABELS CONFORMING TO CUSTOMER REQUIREMENTS.

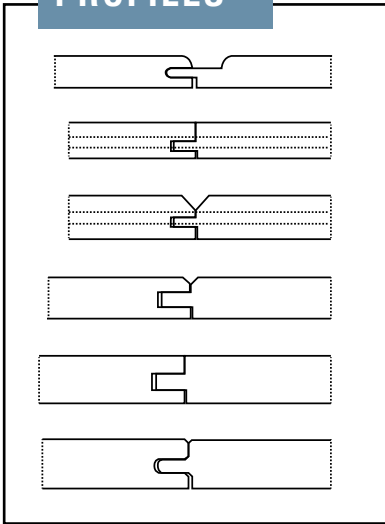
# End tongue and groove

The advantage of end tongue and grooved panelling and floors is that you can reduce waste and get nicer joints. This is advantageous when laying long sections of ceilings or floors.

You can join the boards wherever you want to, even between the joists and they are not as dependent on length.

We can provide end T&G on most of our profiles and dimensions. We also have the possibility of profiling the ended T&G; getting a patterned effect in this manner.

## PROFILES



# Finishings

Over 30 years experience of finishings for indoor and outdoor panelling and floors. For indoor products we use lacquer, oil or wax. For outdoor products, we have different base coats and top coat colours too.

We also have the ability to run off different colours in RAL and NCS scales for instance.

We finish our products either on three sides or four. The four sided treatment makes the sections more stable.

All our paints are water-based and formulated with the environment in mind. We are unique given that we even sand inside the profile. After the drying process, we have the possibility of polishing the products.

## INDOOR FINISHING

(Smooth planed or brushed)

- Natural lacquer
- White lacquer
- White wax
- White finishing coat, finely sawn

## FLOOR FINISHINGS

(Smooth planed or brushed)

- Natural wax oil
- White wax oil

## OUTDOOR FINISHINGS

- Outdoor base coat, natural
- Outdoor base coat light grey
- Outdoor base preservative treatment + light grey base coat
- Certain standard base coat colours
- Base coat + top coat white
- Certain standard base and top coat colours

We are part of the group Profura AB together with  
Balungstrands sawmill. This gives us a stable flow of high-quality wood.  
**We monitor and control all of the individual steps of the production chain "From the forest to the customer".**



**STIGMA**  
*of Sweden*